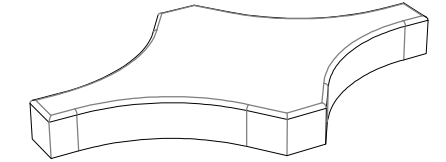
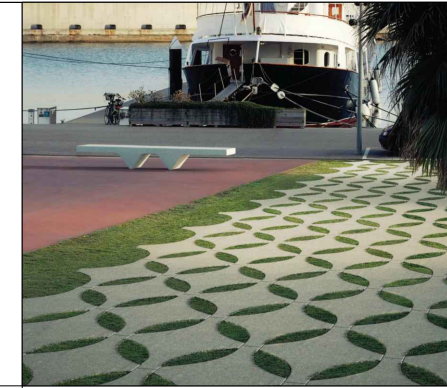


CARACTERÍSTICAS / FEATURES

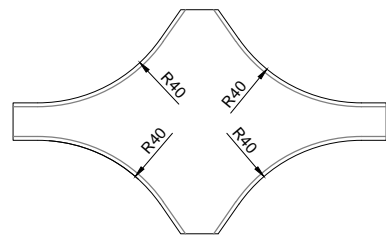
Material hormigón petra 1
Acabado decapado e hidrofugado
Dimensiones l. 100, a. 60, h. 10 cm.
Color ver carta de colores
Fijación simplemente apoyado o mediate resina epoxy
Peso 62 Kg
Palet 120 x 100 x 100 cm [8 unidades]
Peso palet 520 Kg

Material precast concrete petra 1
Finish scaled and waterproofed
Dimensions l. 100, w. 60, h. 10 cm
Colour see colour catalogue
Fixing resting on the ground or with resin epoxy
Weight 62 Kg
Pallet 120 x 100 x 100 cm [8 UNITS]
Weight pallet 520 Kg

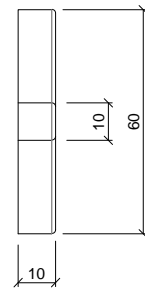
diseñador / design: In-Tenta



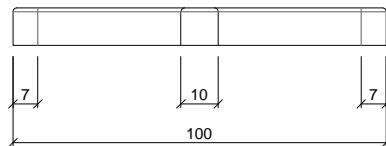
GEOMETRIA / GEOMETRY



ALZADO / FRONT VIEW

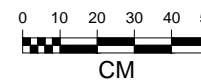
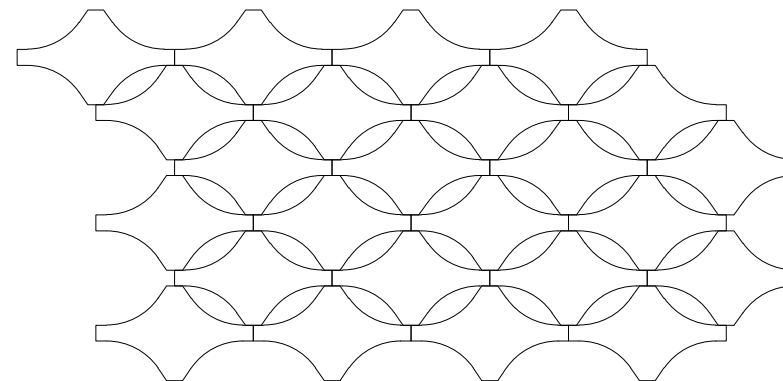
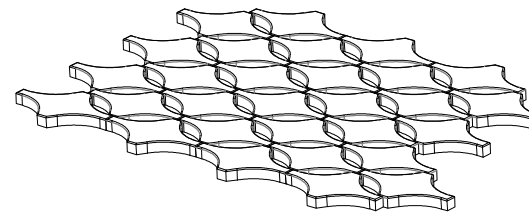


PERFIL / PROFIL VIEW



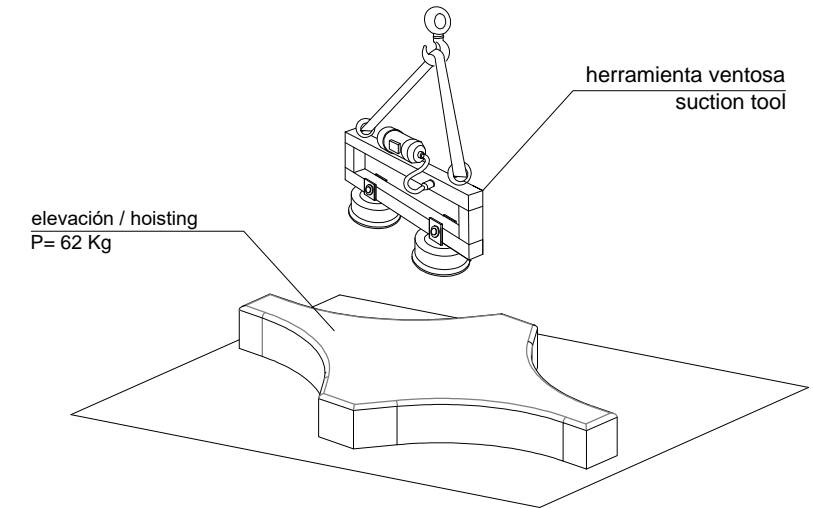
PLANTA / TOP VIEW

COMPOSICIÓN / COMPOSITION



MANIPULACIÓN E INSTALACIÓN / HANDLING AND INSTALLATION

1 elevar mediante una herramienta del tipo ventosa / lift with a suction tool type



2 instalar / install

