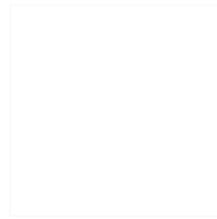


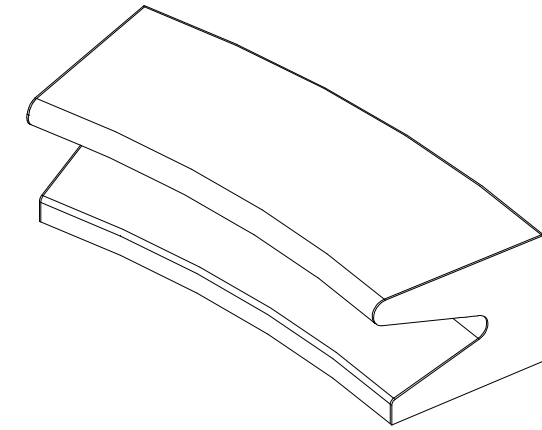
CARACTERISTICAS / FEATURES



**Material** hormigón Petra 1  
**Acabado** decapado e hidrofugado  
**Dimensiones** l. 191,05, a. 73, h. 55 cm  
**Color** ver carta de colores  
**Fijación** apoyado por su propio peso  
**Peso** 1200 kg  
**Palet** 210 x 90 cm

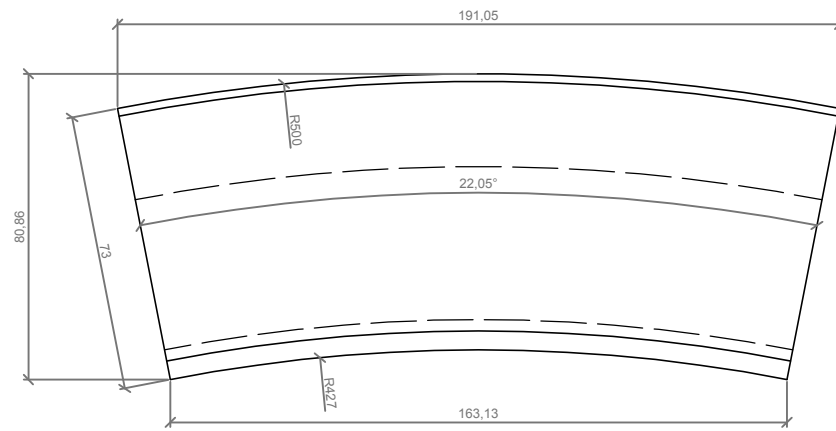
**Material** precast concrete Petra 1  
**Finish** scaled and waterproofed  
**Dimensions** l. 191,05, w. 73, h. 55 cm  
**Colour** see colour catalogue  
**Fixing** resting on the ground  
**Weight** 1,200 kg  
**Pallet** 210 x 90 cm

diseñador / design: magourban

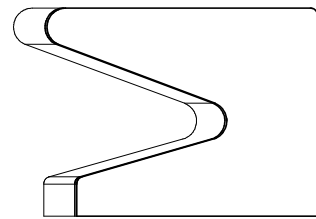


CAMPUS CÓNCAVO

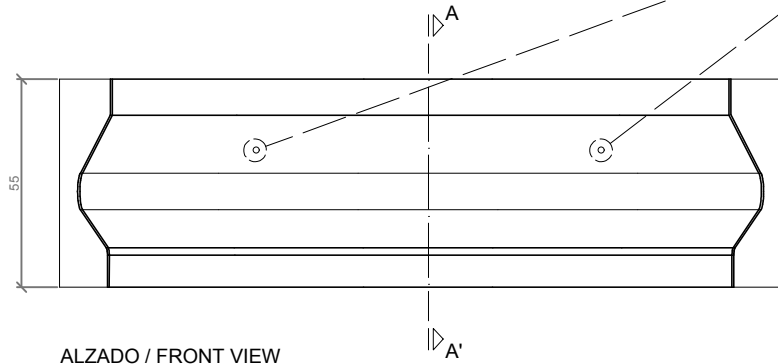
GEOMETRIA / GEOMETRY



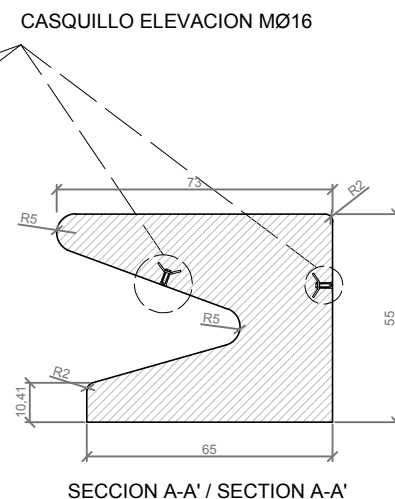
PLANTA / TOP VIEW



PERFIL / PROFILE



ALZADO / FRONT VIEW

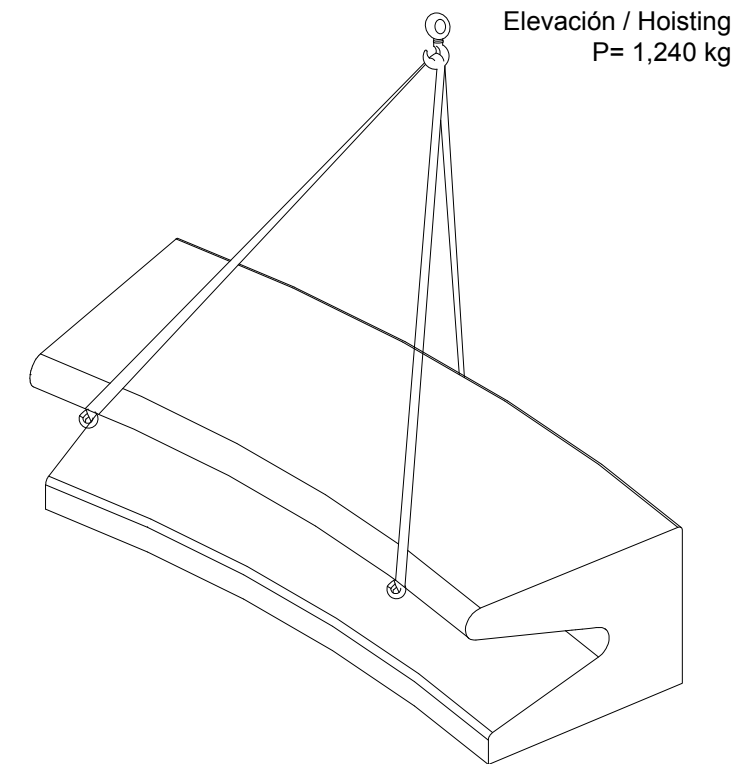


SECCION A-A' / SECTION A-A'

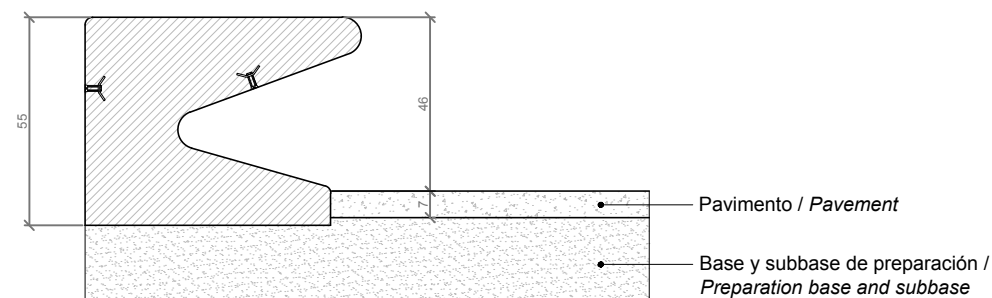
ESC: 1/20

MANIPULACION E INSTALACION / HANDLING AND INSTALLATION

1. Extraer tapa / *Extract stopper*
2. Enroscar cáncamos / *Thread the eyebolt*
3. Elevar y colocar la pieza / *Lift and install the piece*
4. Colocar tapones embellecedores / *Fitting trim stoppers*



ESPECIFICACIONES / SPECIFICATIONS



SECCION BANCO-PAVIMENTO / SECTION BENCH-PAVEMENT

ESC: 1/20