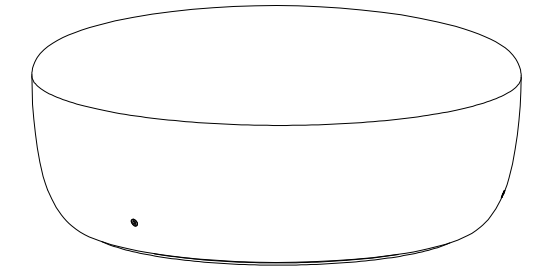


CARACTERÍSTICAS / FEATURES

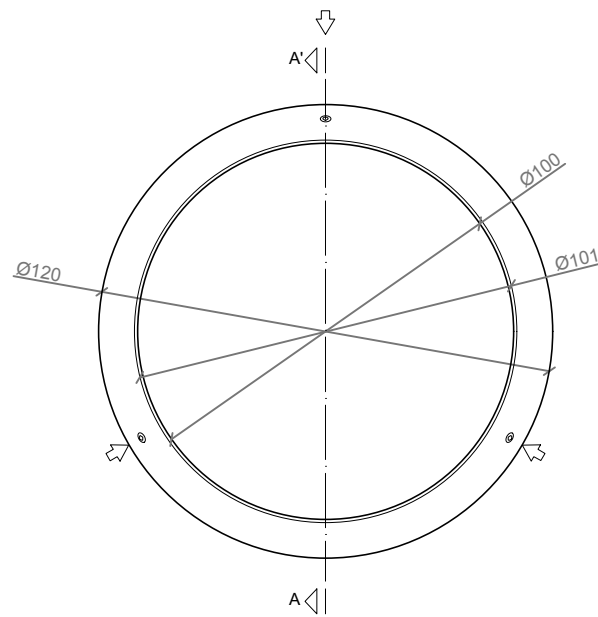
Material hormigón Petra 1
Acabado decapado e hidrofugado
Dimensiones Ø 120, h. 49 cm
Color ver carta de colores
Fijación por su propio peso o con resina epoxi
Peso 1.115 Kg
Palet 130 x 130 cm

Material precast concrete Petra 1
Finish scaled and waterproofed
Dimensions Ø 120, h. 49 cm
Colour see colour catalogue
Fixing resting on the ground or with epoxy resin
Weight 1.115 Kg
Pallet 130 x 130 cm



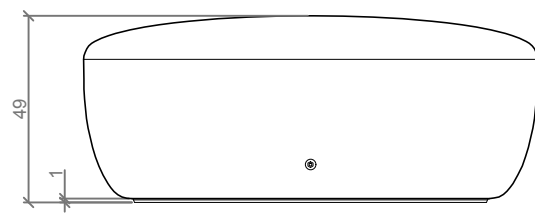
diseñador / design: Kutarq studio + YHY design

GEOMETRIA / GEOMETRY



Ubicación del casquillo roscado
 Location of steel socket threaded

VISTA INFERIOR / BOTTOM VIEW

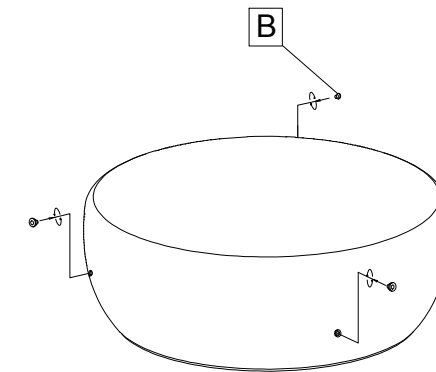


ALZADO / FRONT VIEW

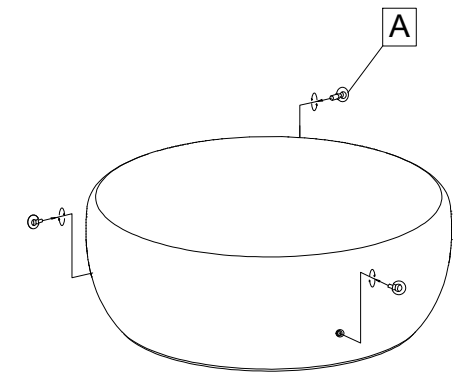
ESCALA / SCALE : 1/ 20

MANIPULACIÓN E INSTALACIÓN / HANDLING AND INSTALLATION

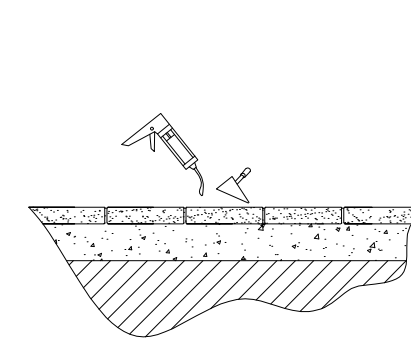
1 Extraer tapa / Extract stopper



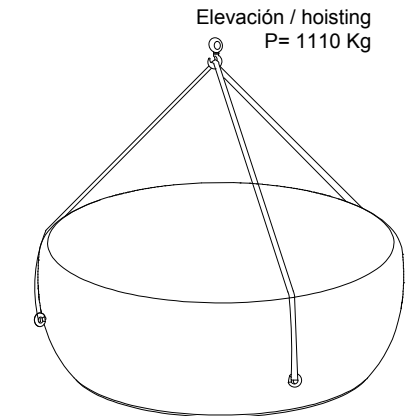
2 Enroscar cáncamo / Thread the eyebolt



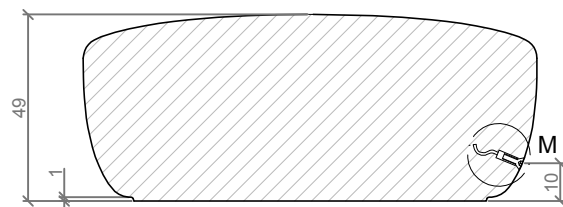
3 Verter resina epoxy / Pour resin epoxy



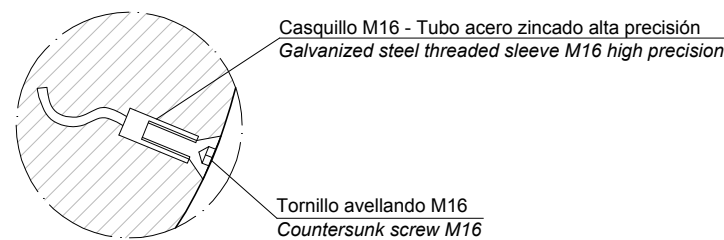
4 Elevar e instalar / Lift and install



ESPECIFICACIONES / SPECIFICATIONS



SECCIÓN A-A' / SECTION A-A'



DETALLE N / DETAIL N

SISTEMA DE ELEVACIÓN / LIFTING SYSTEM

