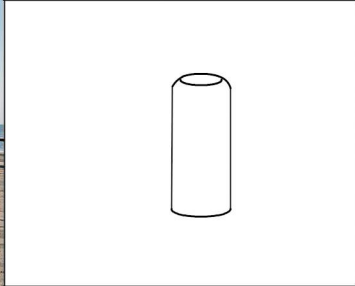


**CARACTERISTICAS / FEATURES**

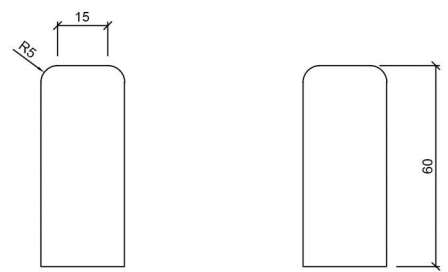
**Material** hormigón petra1  
**Acabado** decapado e hidrofugado  
**Dimensiones** l. Ø25, h. 60 cm.  
**Color** ver carta de colores  
**Fijación** simplemente apoyado o mediate varillas metálicas  
**Peso** 67 Kg  
**Bulto** 120 x 100 x 75 cm [ 12u / bulto ]  
**Peso bulto** 824 Kg

**Material** precast concrete petra1  
**Finish** scaled and waterproofed  
**Dimensions** l. Ø25, h. 60 cm.  
**Colour** see colour catalogue  
**Fixing** resting on the ground & or anchored with metal rod  
**Weight** 67 Kg  
**Package** 100 x 120 x 75cm [ 12u / bulto ]  
**Weight package** 824 Kg

dineñador / design: Ernest Perera

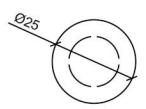


**GEOMETRIA / GEOMETRY**

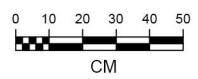


ALZADO

PERFIL



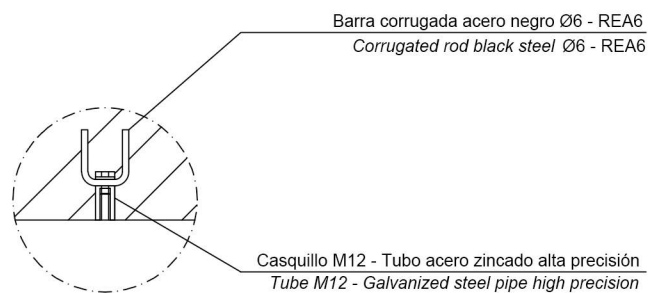
PLANTA



**ESPECIFICACIONES / SPECIFICATIONS**

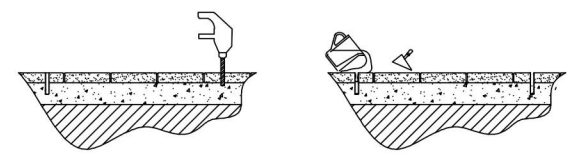


SECTION

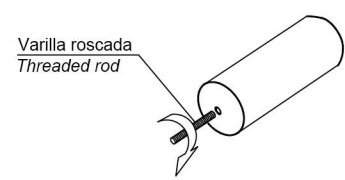


**MANIPULACIÓN E INSTALACIÓN / HANDLING AND INSTALLATION**

- 1 Perforar agujero y verter resina epoxy dentro  
*Drill hole and pour resin epoxy inside hole*



- 2 Posicionar la varilla roscada en el agujero central y apretar  
*Place the threaded rod into the center hole and tighten*



- 3 Insertar varilla roscada en agujero con resina epoxy  
*Insert metal threaded rod in hole with epoxy resin*

