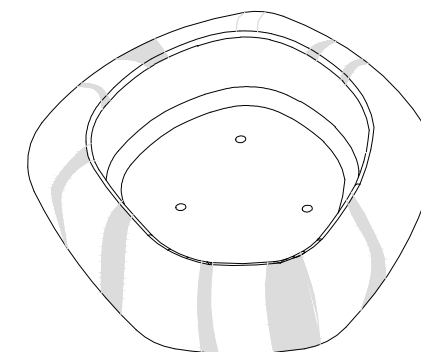


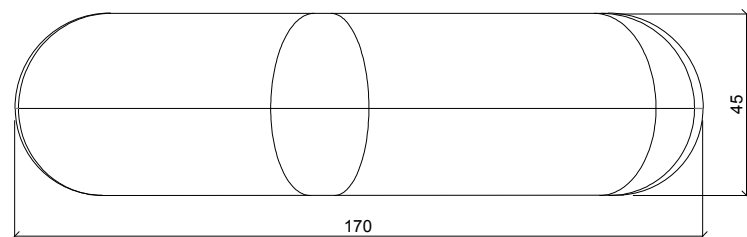
Material hormigón petra 1
Acabado decapado e hidrofugado
Dimensiones l. 170, a. 163, h. 45 cm.
Color ver carta de colores
Fijación simplemente apoyado o mediante resina epoxy
Peso 1260 Kg
Bulto 180 x 180 x 65 cm
Peso bulto 1300 Kg

Material precast concrete petra 1
Finish scaled and waterproofed
Dimensions l. 170, w. 163, h. 45 cm
Colour see colour catalogue
Fixing resting on the ground or with epoxy resin
Weight 1260 Kg
Package 180 x 180 x 65 cm
Weight package 1300 Kg

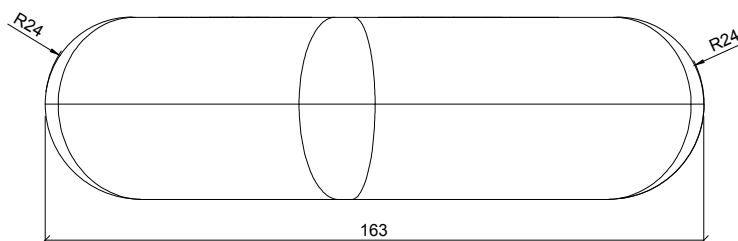
diseñador / design: La Noche de la Iguana - Kiko Solsona



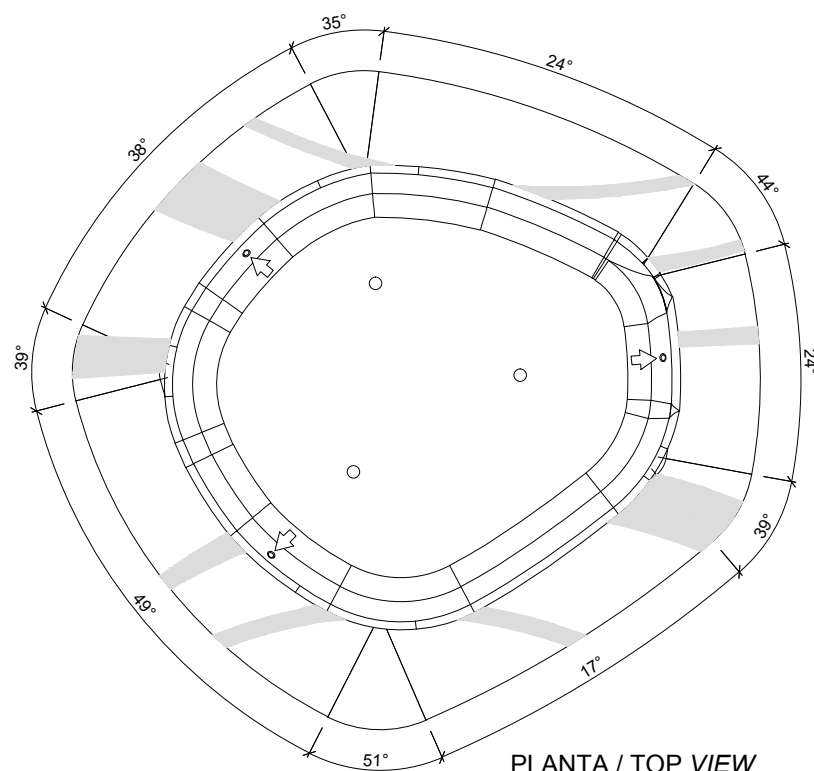
GEOMETRIA / GEOMETRY



ALZADO / FRONT VIEW

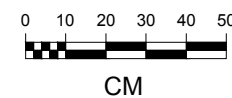


PERFIL / PROFIL VIEW

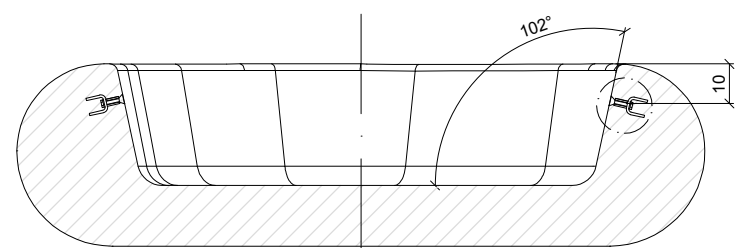


PLANTA / TOP VIEW

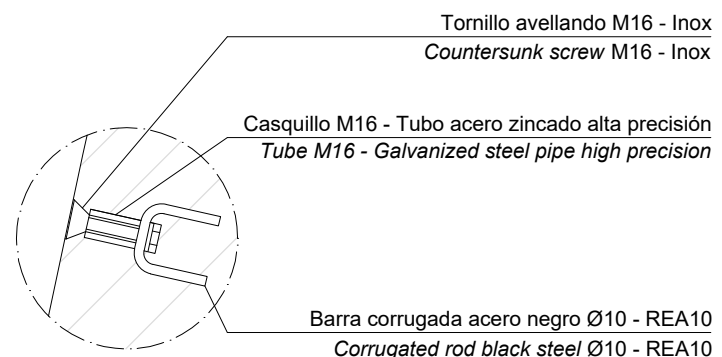
↑ ubicación del casquillo roscado
 location of steel socket threaded



ESPECIFICACIONES / SPECIFICATIONS



SECCIÓN / SECTION



DETALLE / DETAIL

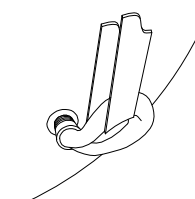
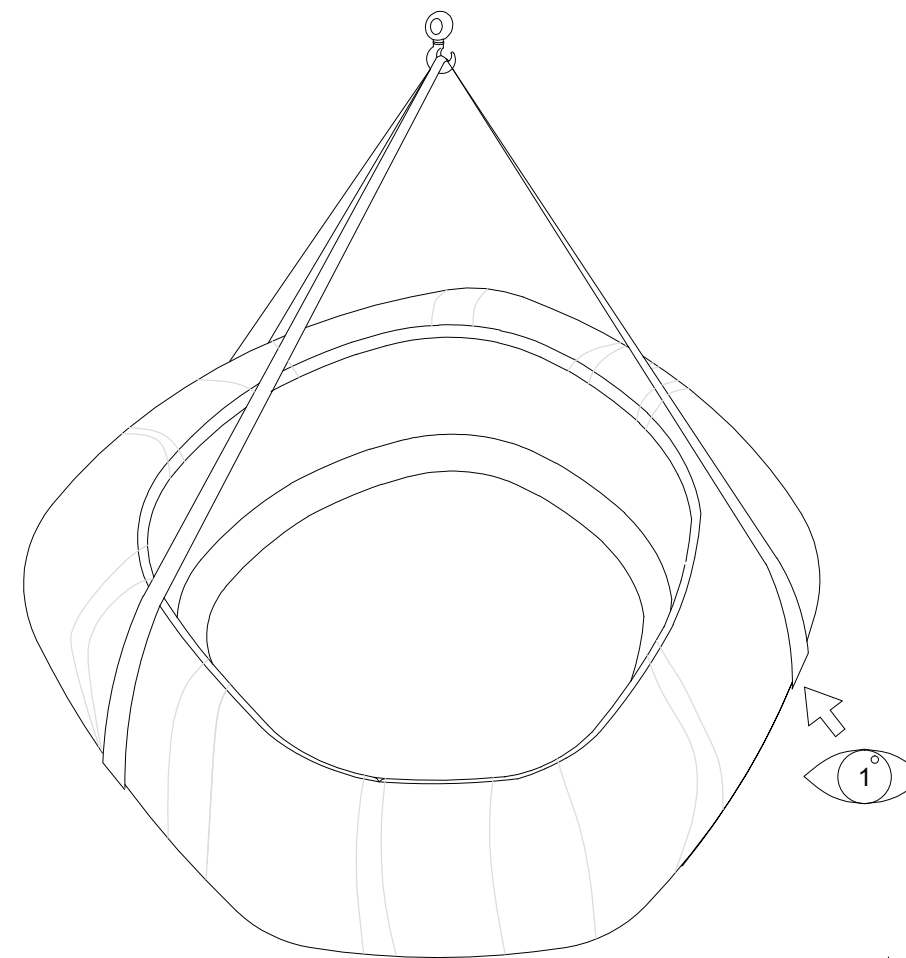
Tornillo avellando M16 - Inox
 Countersunk screw M16 - Inox

Casquillo M16 - Tubo acero zincado alta precisión
 Tube M16 - Galvanized steel pipe high precision

Barra corrugada acero negro Ø10 - REA10
 Corrugated rod black steel Ø10 - REA10

MANIPULACIÓN E INSTALACIÓN / HANDLING AND INSTALLATION

elevación / hoisting
 P= 1260 Kg



DETALLE 1 / DETAIL 1

