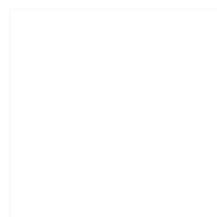
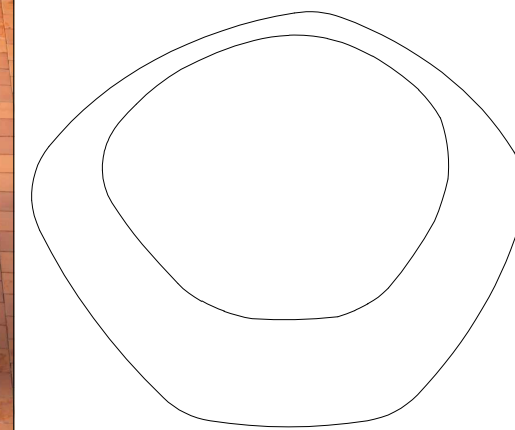


**CARACTERISTICAS / FEATURES**



**Material** hormigón Petra 1  
**Acabado** decapado e hidrofugado  
**Dimensiones** l. 170, a. 163, h. 45 cm  
**Color** ver carta de colores  
**Fijación** apoyado por su propio peso  
**Peso** 1930 Kg  
**Palet** 180 x 180 cm

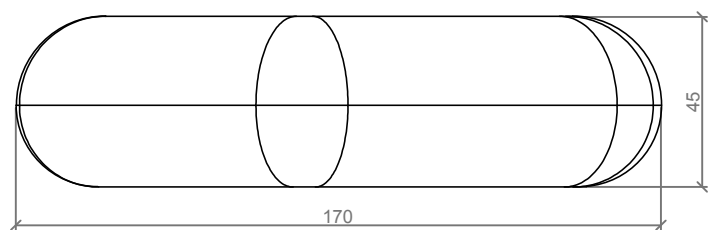
**Material** precast concrete Petra 1  
**Finish** scaled and waterproofed  
**Dimensions** l. 170, w. 163, h. 45 cm  
**Colour** see colour catalogue  
**Fixing** resting on the ground  
**Weight** 1930 Kg  
**Pallet** 180 x 180 cm



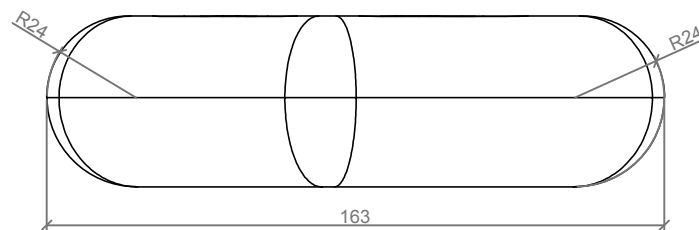
diseñador / design: La Noche de la Iguana - Kiko Solsona

**FLIP-IT B170**

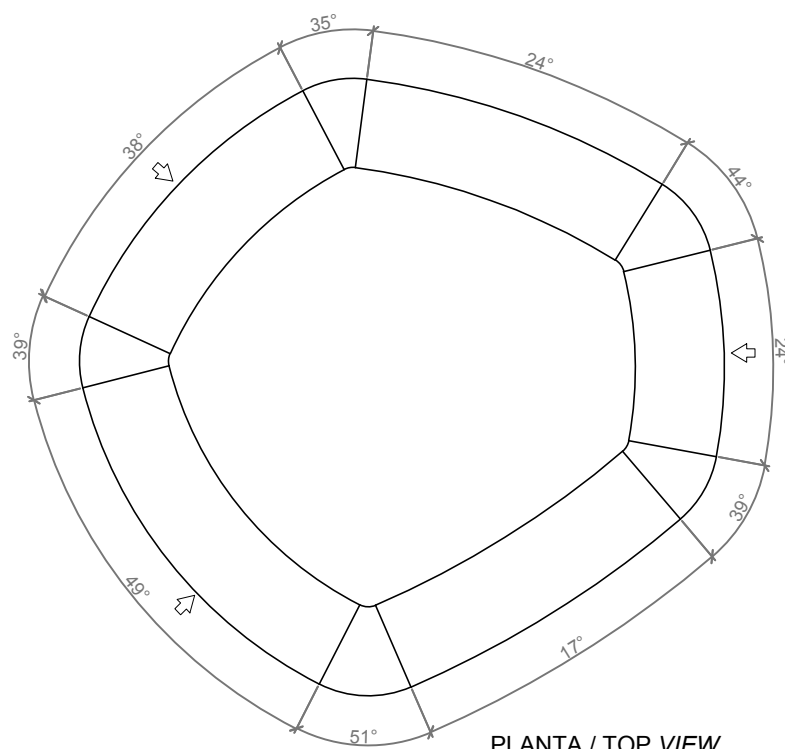
**GEOMETRIA / GEOMETRY**



ALZADO / FRONT VIEW



PERFIL / PROFILE VIEW

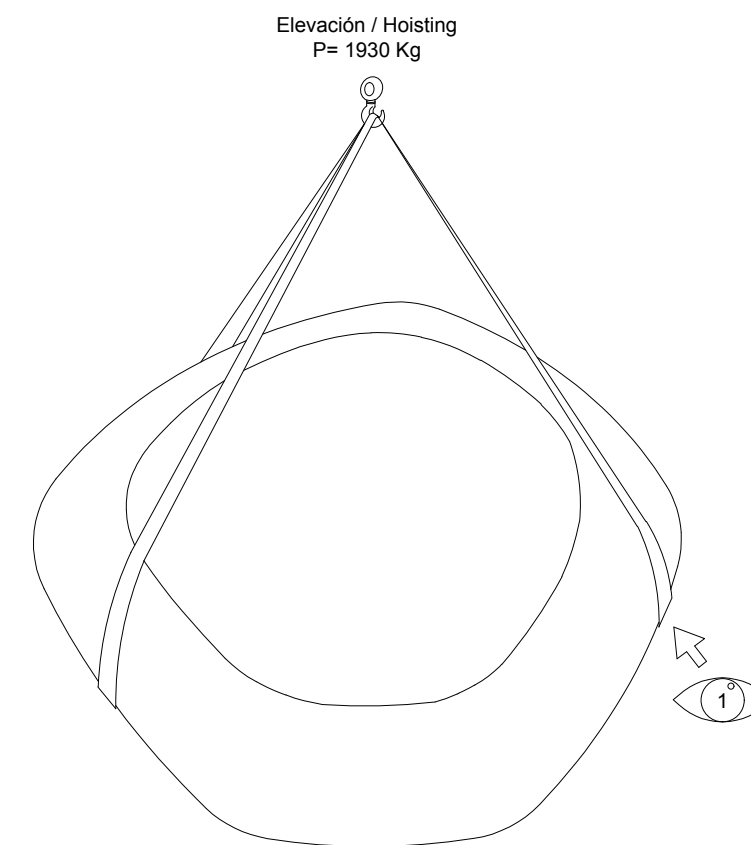


PLANTA / TOP VIEW

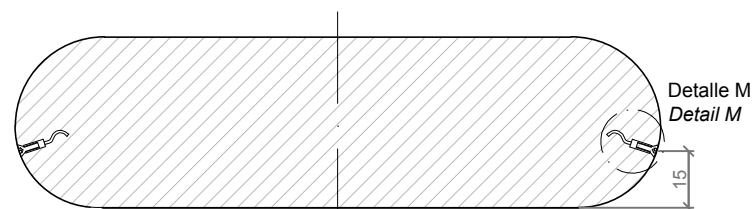
Ubicación del casquillo roscado  
 Location of steel socket threaded

ESC. 1:20

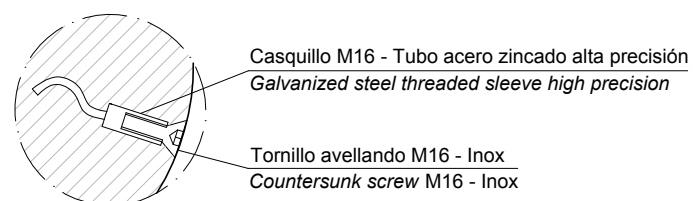
**MANIPULACIÓN E INSTALACIÓN / HANDLING AND INSTALLATION**



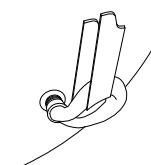
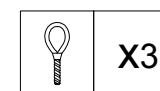
**ESPECIFICACIONES / SPECIFICATIONS**



SECCIÓN / SECTION



DETALLE M / DETAIL M  
 Casquillo de elevación / Lifting sleeve



DETALLE 1 / DETAIL 1